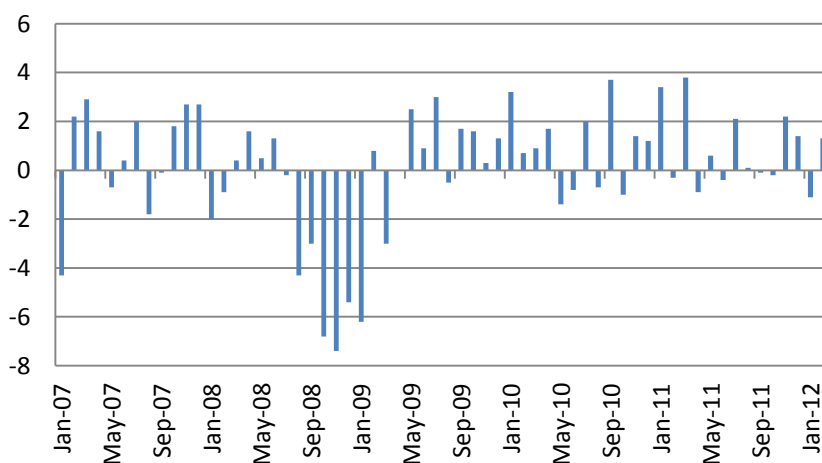


## Ежедневный обзор мирового рынка акций

4 апреля 2012 г.

На биржах США в понедельник наблюдался рост котировок. Индекс S&P 500 потерял 0.4%, Russell 2000 – 0.69%. В аутсайдерах были акции нефтегазового (-0.98%) и горнодобывающего (-0.87%) сектора. Количество растущих/падающих акций составило 345/149. Индекс CBOE put/call в индексе S&P 500 составил 1.54. Разница по волатильности между опционами 90 и 110% составила 9.73.

Индекс производственной активности ISM Нью-Йорка вырос до 67.4 п. с 63.1 п. Фабричные заказы сократились до 1.3% против прогноза 1.5%.



Ключевым событием дня стала публикация стенограмм заседания ФРС США от 13 марта. Ход дискуссии Комитета управляющих не исключил изменения политики «исключительно низких ставок», если в экономике будут наблюдаться существенные улучшения. Перспектива роста ставок обвалила котировки фьючерсов на золото и акций сырьевых компаний.

На торгах Азии в среду преобладает пессимизм. Корейский KOSPI понизился на 1.5%. Японский Nikkei потерял 2.29%. Австралийский S&P/ASX 200 потерял 0.07%. Индексы шанхайской биржи в среднем прибавили 0.4%.

В Европе с утра наблюдалось резкое снижение котировок, которое было выкуплено после публикации данных индексов PMI за март, которые оказались чуть лучше прогноза (но ниже 50 п., важных для констатации активизации экономической активности).

Основные индикаторы рынка		
CDS HY 5Y	574.01	+1.00%
ITX Crossover Euro	246.81	-2.44%
CDS Japan 5Y	98.33	-0.31%
CDS EM 5Y	112.14	-0.05%
CDS Russia 5Y	182.28	-1.62%
US Tsys 10Y	2.67%	+0.08%
US Tsys 5Y	1.37%	+0.06%
Brazil 10Y	2.73%	-0.09%
Germany 10Y	1.37%	-0.28%
EUR/USD	1.3201	-0.97%
USD/JPY	82.6	-0.54%
EUR/GBP	0.8308	+0.49%
Oil Brent	124.65	-0.17%
Gold	1645.5	-1.58%
Copper	8615	-0.30%
Nickel	18381	+1.25%
S&P 500	1403.5	-0.37%
Russell 2000	834.8	-0.69%
Bovespa	64284.26	-1.43%
Topix	834.5	-1.94%
Shanghai Comp	2,262.79	+0.47%
S&P/ASX 300	4,333.90	-0.07%
Sensex 30	17,516.06	-0.46%
Bovespa	64,284.26	-1.43%
DJ Euro Stoxx 50 Fu	2371	-0.88%
CAC Futures	3381.5	-0.59%
DAX Futures	6941	-0.81%
CBOE Put/Call	0.59	+11.32%
CBOE Buy/Write M	902.84	-0.07%
VIX	15.66	+0.13%
VSTOXX	22.2736	+4.98%

\*На 10:00 мск, по данным Bloomberg

Индекс широкого рынка Bloomberg Europe 500 понизился на 0.58% на 12:00 – в аутсайдерах акции промышленных и горнодобывающих компаний.

**Сегодня в США выйдут данные по динамике рабочих мест от ADP и индексу активности в секторе услуг ISM Non-Manufacturing за март.**

#### **Почитать в блогах и СМИ**

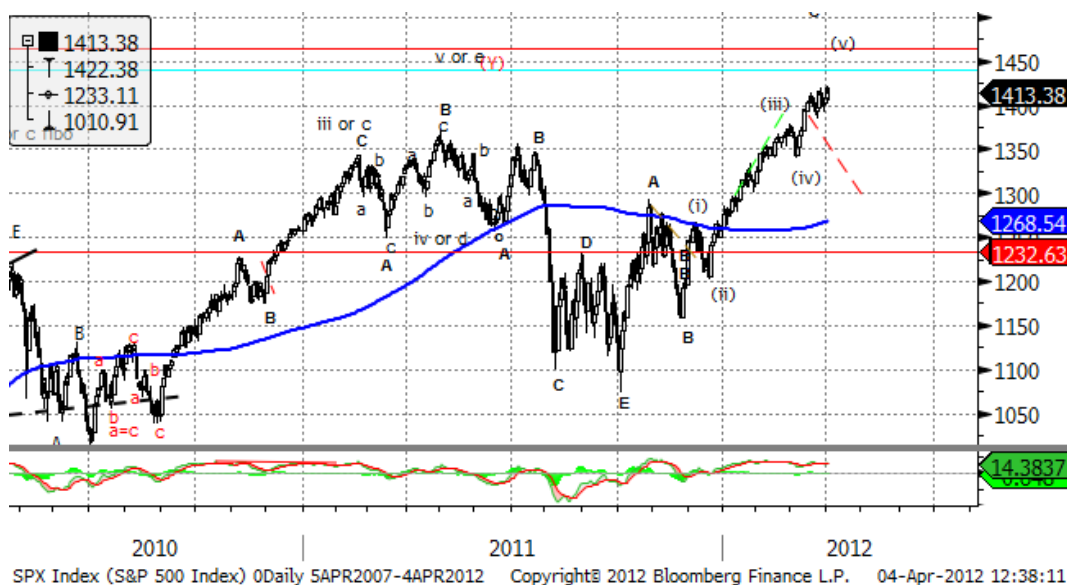
[Wave 5 Of The Cyclical Bull Market](#)

[Fitch reports move away from banks](#)

[Apple-mania spreads, Piper Jaffray sees \\$1,000 stock](#)

[SEC Probes Ties to High-Speed Traders](#)

## Ежедневный обзор



С технической точки зрения основные индексы обновили максимумы 2011 года – коррекция не удалась. Цели дальнейшего роста – 1430, 1466, 1520, 1570. Впрочем, коррекционный потенциал накапливается – при его реализации возможные цели будут находиться на уровнях 1360, 1320, 1300. Если формация с сентября 2011 года – 5-ти волновка, то коррекция может носить плоский характер и закончится в пределах месяца. В дальнейшем возможно продолжение растущего тренда с целями 1466, 1570.

Если мы наблюдаем конец корректирующего паттерна с 2009 года, то конечные среднесрочные цели находятся в районе 1100, 800 по индексу. В этом случае поддержки располагаются в районе 1260, 1200. Впрочем, вероятность данного сценария снижается.

Eurostoxx x 600		
SX3P	412.09	+0.69%
SX4P	601	+0.51%
SX6P	265.27	-1.73%
SX7P	146.36	-5.16%
SX86P	113.7	-1.80%
SX8P	218.93	+0.48%
SXAP	333.39	-1.80%
SXDP	442.85	+1.43%
SXEP	346.05	-0.77%
SXFP	244.66	-0.39%
SXIP	153.21	-4.33%
SXKP	249.07	-0.99%
SXMP	170.35	-1.08%
SXNP	316.93	+0.07%
SXOP	249.77	-2.72%
SXPP	467.54	-0.91%
SXQP	478	+0.90%
SXRP	257.95	-0.91%
SXTP	126.11	-0.06%
SXXP	264.29	-0.99%

Наиболее активные акции в Европе		
SANOMA OYJ	8.71	-9.18%
KBC GROEP	16.87	-8.84%
BANCO POPOLA	1.29	-8.32%
VEOLIA ENVIRON	11.54	-7.09%
PETROPAVLOVSI	519	-7.40%
BANCA POP MIL	0.381	-6.82%
LOGICA PLC	93.75	-6.25%
TELIASONERA AB	43.77	-6.09%
HELLENIC TELECC	3.11	+1.97%
ABERDEEN ASSE	265	+2.28%
GN STORE NORD	62.6	+2.37%
HOME RETAIL GF	115	+1.95%
UCB SA	34.73	+2.66%
LONDON STOCK	1082	+2.95%
CAIRN ENERGY	330.3	+3.09%

## Ежедневный обзор

Календарь макроэкономической статистики*						
Date Time		Event		Surve	Prior	Revised
04/02/2012 05:00	JN	Vehicle Sales (YoY)	MAR	--	78.20%	31.90%
04/02/2012 07:55	GE	PMI Manufacturing	MAR F	48.1	--	48.1
04/02/2012 08:00	EC	PMI Manufacturing	MAR F	47.7	--	47.7
04/02/2012 08:30	UK	BoE Housing Equity Withdrawal	4Q	-	--	-£8.6B
04/02/2012 08:30	UK	PMI Manufacturing	MAR	50.7	--	51.2
04/02/2012 09:00	EC	Euro-Zone Unemployment Rate	FEB	10.80	--	10.70%
04/02/2012 10:30	EC	ECB's Kranjec press conference in				
04/02/2012 14:00	US	Construction Spending MoM	FEB	0.70%	--	-0.10%
04/02/2012 14:00	US	ISM Manufacturing	MAR	53	--	52.4
04/02/2012 14:00	US	ISM Prices Paid	MAR	63	--	61.5
04/02/2012 14:00	US	Fed's Bullard Speaks at Tsinghua				
04/02/2012 16:35	US	Fed's Pinalto Speaks on Monetary				
04/02/2012 23:50	JN	Monetary Base (YoY)	MAR	--	--	11.30%
04/03/2012 01:00	CH	China Non-manufacturing PMI	MAR	--	--	48.4
04/03/2012 01:30	JN	Labor Cash Earnings YoY	FEB	0.10%	--	0.00%
04/03/2012 08:30	UK	PMI Construction	MAR	53.4	--	54.3
04/03/2012 09:00	EC	Euro-Zone PPI (MoM)	FEB	0.50%	--	0.70%
04/03/2012 09:00	EC	Euro-Zone PPI (YoY)	FEB	3.50%	--	3.70%
04/03/2012 13:45	US	ISM New York	MAR	--	--	63.1
04/03/2012 14:00	US	Factory Orders	FEB	1.50%	--	-1.00%
04/03/2012 18:00	US	Minutes of FOMC Meeting				
04/03/2012 18:00	US	Fed Releases Minutes from March				
04/03/2012 20:05	US	Fed's Williams Speaks on Economy				
04/03/2012 21:00	US	Total Vehicle Sales	MAR	14.55	--	15.03M
04/03/2012 21:00	US	Domestic Vehicle Sales	MAR	11.30	--	11.70M
04/03/2012 23:01	UK	BRC Shop Price Index YoY	MAR	1.50%	--	1.20%
04/04/2012 07:55	GE	PMI Services	MAR F	51.8	--	51.8
04/04/2012 08:00	EC	PMI Composite	MAR F	48.7	--	48.7
04/04/2012 08:00	EC	PMI Services	MAR F	48.7	--	48.7
04/04/2012 08:30	UK	PMI Services	MAR	53.4	--	53.8
04/04/2012 08:30	UK	Official Reserves (Changes)	MAR	--	--	\$746M
04/04/2012 09:00	EC	Euro-Zone Retail Sales (MoM)	FEB	-	--	0.30%
04/04/2012 09:00	EC	Euro-Zone Retail Sales (YoY)	FEB	-	--	0.00%
04/04/2012 10:00	GE	Factory Orders YoY (nsa)	FEB	-	--	-4.90%
04/04/2012 10:00	GE	Factory Orders MoM (sa)	FEB	1.40%	--	-2.70%
04/04/2012 11:00	US	MBA Mortgage Applications	30-Mar	--	--	-2.70%
04/04/2012 11:45	EC	ECB Announces Interest Rates	4-Apr	1.00%	--	1.00%
04/04/2012 12:15	US	ADP Employment Change	MAR	200K	--	216K
04/04/2012 14:00	US	ISM Non-Manf. Composite	MAR	56.9	--	57.3

Подиндекс		
S&P 500		Изм.
CONS DISCRET	357.27	-0.25%
CONS STAPLES	352.30	+0.68%
ENERGY	538.06	-0.51%
FINANCIALS	213.10	-0.08%
HEALTH CARE	437.31	+1.06%
INDUSTRIALS	323.35	-0.53%
INFO TECH	501.58	+0.18%
MATERIALS	235.32	-0.56%
TELECOM SERV	131.38	-0.58%
UTILITIES	178.90	+0.54%

Наиболее активные акции в США*		
SUPERVALU INC	5.3	-7.18%
MOLSON COORS-B	43.18	-4.57%
JUNIPER NETWORKS	21.92	-4.20%
LINEAR TECH CORP	32.46	-3.68%
ALPHA NATURAL RE	14.69	-3.42%
ALTERA CORP	38.56	-3.16%
WHIRLPOOL CORP	74.5	-3.07%
TEXAS INSTRUMENT	32.6	-3.01%
PRICELINE.COM	743.6	+3.64%
FIFTH THIRD BANC	14.58	+3.77%
TEXTRON INC	28.89	+3.81%
URBAN OUTFITTER	30.22	+3.81%
CONSTELLATION-A	24.5	+3.86%
SEMPRA ENERGY	62.28	+3.87%
H&R BLOCK INC	17.12	+3.95%

## Ежедневный обзор

04/04/2012 15:00	US	Fed's Williams Speaks in San				
04/04/2012 23:50	JN	Japan Buying Foreign Bonds	30-Mar	--	--	¥349.5B
04/04/2012 23:50	JN	Japan Buying Foreign Stocks	30-Mar	--	--	-
04/04/2012 23:50	JN	Foreign Buying Japan Bonds	30-Mar	--	--	-
04/04/2012 23:50	JN	Foreign Buying Japan Stocks	30-Mar	--	--	-
04/05/2012	US	ICSC Chain Store Sales YoY	MAR	--	--	6.70%
04/05/2012	UK	New Car Registrations (YoY)	MAR	--	--	-2.50%
04/05/2012 02:00	JN	Tokyo Avg Office Vacancies (%)	MAR	--	--	9.15
04/05/2012 02:30	CH	China HSBC Services PMI	MAR	--	--	53.9
04/05/2012 08:30	UK	Industrial Production (MoM)	FEB	0.40%	--	-0.40%
04/05/2012 08:30	UK	Industrial Production (YoY)	FEB	-	--	-3.80%
04/05/2012 08:30	UK	Manufacturing Production (MoM)	FEB	0.10%	--	0.10%
04/05/2012 08:30	UK	Manufacturing Production (YoY)	FEB	0.10%	--	0.30%
04/05/2012 10:00	GE	Industrial Production MoM (sa)	FEB	-	--	1.60%
04/05/2012 10:00	GE	Industrial Prod. YoY (nsa wda)	FEB	0.30%	--	1.80%
04/05/2012 11:00	UK	BOE Asset Purchase Target	APR	325B	--	325B
04/05/2012 11:00	UK	BOE ANNOUNCES RATES	5-Apr	0.50%	--	0.50%
04/05/2012 11:30	US	Challenger Job Cuts YoY	MAR	--	--	2.00%
04/05/2012 12:00	US	RBC Consumer Outlook Index	APR	--	--	47.5
04/05/2012 12:30	US	Initial Jobless Claims	31-Mar	356K	--	359K
04/05/2012 12:30	US	Continuing Claims	24-Mar	3328K	--	3340K
04/05/2012 13:10	US	Fed's Bullard Speaks on Economy,				
04/05/2012 13:45	US	Bloomberg Consumer Comfort	1-Apr	--	--	-34.7
04/05/2012 14:00	UK	NIESR GDP Estimate	MAR	--	--	0.10%
04/05/2012 23:50	JN	Official Reserve Assets	MAR	--	--	\$1302.9
04/06/2012 05:00	JN	Coincident Index CI	FEB P	93.6	--	92.7
04/06/2012 05:00	JN	Leading Index CI	FEB P	95.8	--	94.4
04/06/2012 12:30	US	Change in Nonfarm Payrolls	MAR	205K	--	227K
04/06/2012 12:30	US	Change in Private Payrolls	MAR	221K	--	233K
04/06/2012 12:30	US	Change in Manufact. Payrolls	MAR	21K	--	31K
04/06/2012 12:30	US	Unemployment Rate	MAR	8.30%	--	8.30%
04/06/2012 12:30	US	Avg Hourly Earning MOM All Emp	MAR	0.20%	--	0.10%
04/06/2012 12:30	US	Avg Hourly Earning YOY All Emp	MAR	1.90%	--	1.90%
04/06/2012 12:30	US	Avg Weekly Hours All Employees	MAR	34.5	--	34.5
04/06/2012 12:30	US	Change in Household Employ	MAR	--	--	428
04/06/2012 12:30	US	Underemployment Rate (U6)	MAR	--	--	14.90%
04/06/2012 19:00	US	Consumer Credit	FEB	\$12.0	--	\$17.776
04/08/2012 23:50	JN	Current Account Total	FEB	--	--	-
04/08/2012 23:50	JN	Adjusted Current Account Total	FEB	--	--	¥115.6B
04/08/2012 23:50	JN	Current Account Balance YOY%	FEB	--	--	-
04/08/2012 23:50	JN	Trade Balance - BOP Basis	FEB	--	--	-
04/09/2012	JN	Eco Watchers Survey: Current	MAR	--	--	45.9
04/09/2012	JN	Eco Watchers Survey: Outlook	MAR	--	--	50.1

## Ежедневный обзор

04/09/2012 01:30	CH	Producer Price Index (YoY)	MAR	-	--	0.00%
04/09/2012 01:30	CH	Consumer Price Index (YoY)	MAR	3.40%	--	3.20%
04/09/2012 04:30	JN	Bankruptcies (YoY)	MAR	--	--	5.20%
04/09/2012 08:30	EC	Sentix Investor Confidence	APR	--	--	-8.2
04/09/2012 15:30	US	U.S. to Sell 6-Month Bills				
04/09/2012 15:30	US	U.S. to Sell 3-Month Bills				
04/09/2012 22:00	US	Fed's Bernanke Speaks at Stone				
04/09/2012 23:01	UK	Lloyds Employment Confidence	MAR	--	--	-69
04/09/2012 23:01	UK	RICS House Price Balance	MAR	--	--	-13%
04/10/2012	JN	BOJ Target Rate	10-Apr	--	--	0.10%
04/10/2012	CH	Trade Balance (USD)	MAR	-	--	-
04/10/2012	CH	Exports YoY%	MAR	6.90%	--	18.40%
04/10/2012	CH	Imports YoY%	MAR	9.10%	--	39.60%
04/10/2012 06:00	GE	Exports SA (MoM)	FEB	--	--	2.30%
04/10/2012 06:00	GE	Imports SA (MoM)	FEB	--	--	2.40%
04/10/2012 06:00	GE	Current Account (EURO)	FEB	--	--	8.0B
04/10/2012 06:00	GE	Trade Balance	FEB	--	--	13.1B
04/10/2012 06:00	JN	Machine Tool Orders (YoY)	MAR P	--	--	-8.60%
04/10/2012 08:30	UK	DCLG UK House Prices (YoY)	FEB	--	--	0.20%
04/10/2012 11:30	US	NFIB Small Business Optimism	MAR	--	--	94.3
04/10/2012 14:00	US	IBD/TIPP Economic Optimism	APR	--	--	47.5
04/10/2012 14:00	US	JOLTs Job Openings	FEB	--	--	3459
04/10/2012 14:00	US	Wholesale Inventories	FEB	0.50%	--	0.40%
04/10/2012 15:30	US	U.S. to Sell 4-Week Bills				
04/10/2012 16:45	US	Fed's Lockhart Gives Welcome at				
04/10/2012 17:00	US	U.S. to Sell 3-Year Notes				
04/10/2012 18:30	US	Fed's Kocherlakota Speaks in				
04/10/2012 23:01	UK	BRC Sales Like-For-Like YoY	MAR	--	--	-0.30%
04/10/2012 23:50	JN	Bank Lending Ex-Trusts YoY	MAR	--	--	0.80%
04/10/2012 23:50	JN	Bank Lending incl Trusts (YoY)	MAR	--	--	--
04/10/2012 23:50	JN	Machine Orders (MoM)	FEB	--	--	3.40%
04/10/2012 23:50	JN	Machine Orders YOY%	FEB	--	--	5.70%
04/11/2012 06:30	EC	ECB's Coeure Speaks in Paris				
04/11/2012 11:00	US	MBA Mortgage Applications	6-Apr	--	--	--
04/11/2012 12:20	US	Fed's Lockhart Gives Welcome,				
04/11/2012 12:30	US	Import Price Index (MoM)	MAR	1.10%	--	0.40%
04/11/2012 12:30	US	Import Price Index (YoY)	MAR	--	--	5.50%
04/11/2012 13:30	US	Fed's George to Speak at Minsky				
04/11/2012 14:30	US	Fed's Rosengren Speaks on Money				
04/11/2012 17:00	US	U.S. to Sell 10-Year Notes				
04/11/2012 18:00	US	Fed's Beige Book				
04/11/2012 18:00	US	Fed Releases Beige Book Economic				
04/11/2012 18:00	US	Monthly Budget Statement	MAR	--	--	--

## Ежедневный обзор

04/11/2012 21:00	US	Fed's Bullard Delivers Opening				
04/11/2012 23:50	JN	Japan Money Stock M2 YoY	MAR	--	--	2.90%
04/11/2012 23:50	JN	Japan Money Stock M3 YoY	MAR	--	--	2.50%
04/11/2012 23:50	JN	Domestic CGPI (MoM)	MAR	--	--	0.20%
04/11/2012 23:50	JN	Domestic CGPI (YoY)	MAR	--	--	0.60%
04/12/2012 06:55	GE	ECB's Asmussen on Podium				
04/12/2012 08:00	EC	ECB Publishes April Monthly				
04/12/2012 08:30	UK	Visible Trade Balance GBP/Mn	FEB	--	--	-£7532
04/12/2012 08:30	UK	Trade Balance Non EU GBP/Mn	FEB	--	--	-£3678
04/12/2012 08:30	UK	Total Trade Balance (GBP/Mln)	FEB	--	--	-£1762
04/12/2012 09:00	EC	Euro-Zone Ind. Prod. wda (YoY)	FEB	--	--	-1.20%
04/12/2012 09:00	EC	Euro-Zone Ind. Prod. sa (MoM)	FEB	--	--	0.20%
04/12/2012 11:00	EC	ECB's Asmussen Speaks in Dublin				
04/12/2012 12:30	US	Trade Balance	FEB	-	--	-\$52.6B
04/12/2012 12:30	US	Producer Price Index (MoM)	MAR	0.30%	--	0.40%
04/12/2012 12:30	US	PPI Ex Food & Energy (MoM)	MAR	0.20%	--	0.20%
04/12/2012 12:30	US	Producer Price Index (YoY)	MAR	--	--	3.30%
04/12/2012 12:30	US	PPI Ex Food & Energy (YoY)	MAR	--	--	3.00%
04/12/2012 12:30	US	Initial Jobless Claims	7-Apr	--	--	--
04/12/2012 12:30	US	Continuing Claims	31-Mar	--	--	--
04/12/2012 13:00	EC	ECB's Praet Speaks in New York				
04/12/2012 13:00	US	Fed's Lockhart to Moderate Panel				
04/12/2012 13:45	US	Bloomberg Consumer Comfort	8-Apr	--	--	--
04/12/2012 14:00	US	New York Fed's Cumming to Speak				
04/12/2012 14:00	US	Fed's Nellie Liang to Speak on				
04/12/2012 17:00	US	U.S. to Sell 30-Year Bonds				
04/12/2012 17:00	US	Fed's Kocherlakota Speaks in White				
04/13/2012 02:00	CH	Industrial Production YTD YoY	MAR	11.30	--	11.40%
04/13/2012 02:00	CH	Industrial Production (YoY)	MAR	11.40	--	--
04/13/2012 02:00	CH	Fixed Assets Inv Excl. Rural YTD YoY	MAR	20.80	--	21.50%
04/13/2012 02:00	CH	Real GDP YTD (YoY)	1Q	8.30%	--	9.20%
04/13/2012 02:00	CH	Real GDP (QoQ)	1Q	1.90%	--	2.00%
04/13/2012 02:00	CH	Real GDP (YoY)	1Q	8.30%	--	8.90%
04/13/2012 02:00	CH	Retail Sales YTD YoY	MAR	14.80	--	14.70%
04/13/2012 02:00	CH	Retail Sales (YoY)	MAR	15.00	--	--
04/13/2012 06:00	GE	Consumer Price Index (MoM)	MAR F	--	--	0.30%
04/13/2012 06:00	GE	Consumer Price Index (YoY)	MAR F	--	--	2.10%
04/13/2012 06:00	GE	CPI - EU Harmonised (MoM)	MAR F	--	--	0.40%
04/13/2012 06:00	GE	CPI - EU Harmonised (YoY)	MAR F	--	--	2.30%
04/13/2012 06:55	EC	ECB's Asmussen Speaks in Berlin				
04/13/2012 08:30	UK	PPI Input NSA (MoM)	MAR	--	--	2.10%
04/13/2012 08:30	UK	PPI Input NSA (YoY)	MAR	--	--	7.30%
04/13/2012 08:30	UK	PPI Output n.s.a. (MoM)	MAR	--	--	0.60%

## Ежедневный обзор

04/13/2012 08:30	UK	PPI Output n.s.a. (YoY)	MAR	--	--	4.10%
04/13/2012 08:30	UK	PPI Output Core NSA (MoM)	MAR	--	--	0.50%
04/13/2012 08:30	UK	PPI Output Core NSA (YoY)	MAR	--	--	3.00%
04/13/2012 12:30	US	Consumer Price Index (MoM)	MAR	0.20%	--	0.40%
04/13/2012 12:30	US	CPI Ex Food & Energy (MoM)	MAR	0.20%	--	0.10%
04/13/2012 12:30	US	Consumer Price Index (YoY)	MAR	--	--	2.90%
04/13/2012 12:30	US	CPI Ex Food & Energy (YoY)	MAR	--	--	2.20%
04/13/2012 12:30	US	Consumer Price Index NSA	MAR	--	--	227.663
04/13/2012 12:30	US	CPI Core Index SA	MAR	--	--	227.907
04/13/2012 13:55	US	U. of Michigan Confidence	APR P	--	--	76.2
04/15/2012 23:01	UK	Rightmove House Prices (MoM)	APR	--	--	1.60%
04/15/2012 23:01	UK	Rightmove House Prices (YoY)	APR	--	--	2.20%
04/16/2012 09:00	EC	Euro-Zone Trade Balance sa	FEB	--	--	5.9B
04/16/2012 09:00	EC	Euro-Zone Trade Balance	FEB	--	--	-7.6B
04/16/2012 12:30	US	Empire Manufacturing	APR	--	--	20.21
04/16/2012 12:30	US	Advance Retail Sales	MAR	--	--	1.10%
04/16/2012 12:30	US	Retail Sales Less Autos	MAR	--	--	0.90%
04/16/2012 12:30	US	Retail Sales Ex Auto & Gas	MAR	--	--	0.60%
04/16/2012 12:30	US	Retail Sales "Control Group"	MAR	--	--	0.50%
04/16/2012 13:00	US	Total Net TIC Flows	FEB	--	--	\$18.8B
04/16/2012 13:00	US	Net Long-term TIC Flows	FEB	--	--	\$101.0B
04/16/2012 14:00	US	Business Inventories	FEB	--	--	0.70%
04/16/2012 14:00	US	NAHB Housing Market Index	APR	--	--	28
04/16/2012 15:30	US	U.S. to Sell 3-Month Bills				
04/16/2012 15:30	US	U.S. to Sell 6-Month Bills				
04/16/2012 19:30	US	Fed's Bullard Speaks on Economy,				
02-05 APR	UK	Halifax House Price 3Mths/Year	MAR	-	--	-1.90%
02-05 APR	UK	Halifax House Prices sa (MoM)	MAR	-	--	-0.50%
06-10 APR	CH	Business Climate Index	1Q	--	--	128.2
06-10 APR	CH	Entrepreneur Confidence Index	1Q	--	--	122
08-13 APR	CH	Foreign Exchange Reserves	MAR	\$3215	--	\$3181.1
08-13 APR	CH	New Yuan Loans	MAR	780.0	--	710.7B
08-13 APR	CH	Money Supply - M0 (YoY)	MAR	--	--	8.80%
08-13 APR	CH	Money Supply - M1 (YoY)	MAR	5.50%	--	4.30%
08-13 APR	CH	Money Supply - M2 (YoY)	MAR	13.00	--	13.00%
09-12 APR	GE	Wholesale Price Index (MoM)	MAR	--	--	1.00%
09-12 APR	GE	Wholesale price Index (YoY)	MAR	--	--	2.60%
14-18 APR	CH	Actual FDI (YoY)	MAR	--	--	-0.90%
16-20 APR	JN	Nationwide Dept. Sales (YoY)	MAR	--	--	--
16-20 APR	JN	Tokyo Dept. Store Sales (YoY)	MAR	--	--	--
16-20 APR	UK	Nationwide Consumer Confidence	MAR	--	--	44

Календарь отчетности, Европа\*



## Ежедневный обзор

Компания	Тиккер	Дата	Время	Период	Консенсус	Опционные ожидания колебания
Barry Callebaut AG	BARN SW	4/2/2012	5:00	S1 2012		0.7
Sofina SA	SOF BB	4/2/2012		Y 2011		1.3
Sofina SA	SOF BB	4/2/2012		Y 2011		1.87
Industrivarden AB	INDUA SS	4/5/2012		Q1 2012		-
Exor SpA	EXO IM	4/6/2012		Y 2011	4.21	-
Bankinter SA	BKT SM	4/13/2012		Q1 2012	0.04	-
Zardoya Otis SA	ZOT SM	4/13/2012		Q1 2012		-
WPP PLC	WPP LN	4/15/2012		Q1 2012		-
Kuehne + Nagel International AG	KNIN VX	4/16/2012		Q1 2012	1.2	-
Castellum AB	CAST SS	4/17/2012	9:00	Q1 2012	1.173	-
Wirecard AG	WDI GR	4/17/2012		Y 2011	0.61	1.85
ASML Holding NV	ASML NA	4/18/2012		Q1 2012	0.655	3.17
Svenska Cellulosa AB	SCAB SS	4/18/2012		Q1 2012	2.199	3.18
TESCO PLC	TSCO LN	4/18/2012		Y 2012	0.344	3.32
Trelleborg AB	TRELB SS	4/19/2012	11:00	Q1 2012	1.608	4.17
Nokia OYJ	NOK1V FH	4/19/2012		Q1 2012	-0.023	6.78
Tele2 AB	TEL2B SS	4/19/2012		Q1 2012	2.752	2.03
Modern Times Group AB	MTGA SS	4/19/2012		Q1 2012	6.258	-
CaixaBank	CABK SM	4/19/2012		Q1 2012		-
Getinge AB	GETIB SS	4/19/2012		Q1 2012	2.117	2.12
Sodexo	SW FP	4/19/2012		S1 2012		0.82
TeliaSonera AB	TLSN SS	4/19/2012		Q1 2012	1.101	5.33
Actelion Ltd	ATLN VX	4/19/2012		Q1 2012	0.653	-
Schindler Holding AG	SCHP VX	4/19/2012		Q1 2012	1.25	-
Enagas SA	ENG SM	4/19/2012		Q1 2012		-
Akzo Nobel NV	AKZA NA	4/19/2012		Q1 2012	0.65	2.24
SKF AB	SKFB SS	4/19/2012		Q1 2012	2.98	4.24
Debenhams PLC	DEB LN	4/19/2012		S1 2012	0.072	-
Chr Hansen Holding A/S	CHR DC	4/20/2012	3:00	Q2 2012	0.197	-
Wartsila OYJ Abp	WRT1V FH	4/20/2012	5:30	Q1 2012	0.341	-
Investment AB Kinnevik	KINVB SS	4/20/2012	6:00	Q1 2012		0.09
National Bank of Greece SA	ETE GA	4/20/2012	14:30	Y 2011	-0.097	-
Heineken NV	HEIA NA	4/20/2012		Q1 2012		2.15
Elan Corp PLC	ELN ID	4/20/2012		Q1 2012	0.014	-
Orion OYJ	ORNBV FH	4/22/2012		Q1 2012	0.406	-
Alfa Laval AB	ALFA SS	4/23/2012	12:00	Q1 2012	1.734	3.62
Koninklijke Philips Electronics NV	PHIA NA	4/23/2012		Q1 2012	0.228	2.70
Saipem SpA	SPM IM	4/23/2012		Q1 2012	0.545	-

## Ежедневный обзор

Snam SpA	SRG IM	4/24/2012	Bef-mkt	Q1 2012		-
ARM Holdings PLC	ARM LN	4/24/2012	Bef-mkt	Q1 2012	0.031	-
Kemira OYJ	KRA1V FH	4/24/2012	6:30	Q1 2012	0.207	-
Scania AB	SCVB SS	4/24/2012	7:30	Q1 2012	1.941	-
Kone OYJ	KNEBV FH	4/24/2012	9:30	Q1 2012	0.365	-
Assa Abloy AB	ASSAB SS	4/24/2012	10:00	Q1 2012	3.005	2.17
Stora Enso OYJ	STERV FH	4/24/2012	10:00	Q1 2012	0.121	2.74
Investor AB	INVEB SS	4/24/2012		Q1 2012		-
Koninklijke KPN NV	KPN NA	4/24/2012		Q1 2012	0.205	1.54
Skandinaviska Enskilda Banken AB	SEBA SS	4/24/2012		Q1 2012	1.218	5.49
Zodiac Aerospace	ZC FP	4/24/2012		S1 2012		-
Temenos Group AG	TEMN SW	4/24/2012		Q1 2012	0.078	3.28
Novartis AG	NOVN VX	4/24/2012		Q1 2012	1.357	-
Nordea Bank AB	NDA SS	4/24/2012		Q1 2012	0.184	3.47
Associated British Foods PLC	ABF LN	4/24/2012		S1 2012	0.336	-
Konecranes OYJ	KCR1V FH	4/25/2012	6:00	Q1 2012	0.253	-
Novozymes A/S	NZYMB DC	4/25/2012	6:00	Q1 2012	1.55	3.03
Ebro Foods SA	EBRO SM	4/25/2012		Q1 2012		1.95
Societe BIC SA	BB FP	4/25/2012		Q1 2012		0.97
Telefonaktiebolaget LM Ericsson	ERICB SS	4/25/2012		Q1 2012	0.598	5.42
Electrolux AB	ELUXB SS	4/25/2012		Q1 2012	1.603	5.22
Swedbank AB	SWEDA SS	4/25/2012		Q1 2012	2.624	3.03
Credit Suisse Group AG	CSGN VX	4/25/2012		Q1 2012	1.037	-
ABB Ltd	ABBN VX	4/25/2012		Q1 2012	0.321	-
Telenor ASA	TEL NO	4/25/2012		Q1 2012	1.945	4.30
Puma SE	PUM GR	4/25/2012		Q1 2012	5.31	1.43
Siemens AG	SIE GR	4/25/2012		Q2 2012	1.58	1.84
SAP AG	SAP GR	4/25/2012		Q1 2012	0.532	0.94
GlaxoSmithKline PLC	GSK LN	4/25/2012		Q1 2012	0.292	2.41
Standard Life PLC	SL/ LN	4/25/2012		Q1 2012		-
QIAGEN NV	QGEN US	4/25/2012		Q1 2012	0.198	2.68
Logitech International SA	LOGN VX	4/26/2012	2:00	Y 2012	0.473	-
Randstad Holding NV	RAND NA	4/26/2012	Bef-mkt	Q1 2012	0.34	3.83
Geberit AG	GEBN VX	4/26/2012	5:00	Q1 2012	1.7	-
Mobistar SA	MOBB BB	4/26/2012	5:00	Q1 2012		2.85
Coloplast A/S	COLOB DC	4/26/2012	6:00	Q2 2012	12.322	-
Kesko OYJ	KESBV FH	4/26/2012	6:00	Q1 2012	0.232	-
Royal Dutch Shell PLC	RDSA LN	4/26/2012	6:00	Q1 2012	1.104	-
Neste Oil OYJ	NES1V FH	4/26/2012	6:00	Q1 2012	0.169	1.37
Fortum OYJ	FUM1V FH	4/26/2012	6:00	Q1 2012	0.543	3.12

## Ежедневный обзор

Husqvarna AB	HUSQB SS	4/26/2012	6:00	Q1 2012	1.027	4.58
UPM-Kymmene OYJ	UPM1V FH	4/26/2012	6:30	Q1 2012	0.129	3.19
Shire PLC	SHP LN	4/26/2012	11:00	Q1 2012	0.9	2.83
STMicroelectronics NV	STM IM	4/26/2012	12:00	Q1 2012	-0.037	3.70
Ferrovial SA	FER SM	4/26/2012	Aft-mkt	Q1 2012		1.83
Outotec OYJ	OTE1V FH	4/26/2012		Q1 2012	0.376	-
Metso OYJ	MEO1V FH	4/26/2012		Q1 2012	0.59	1.96
Fiat SpA	F IM	4/26/2012		Q1 2012		-
Fiat Industrial SpA	FI IM	4/26/2012		Q1 2012	0.113	-
Rhoen Klinikum AG	RHK GR	4/26/2012		Q1 2012	0.27	2.30
Volvo AB	VOLVB SS	4/26/2012		Q1 2012	1.759	3.82
Tenaris SA	TEN IM	4/26/2012		Q1 2012	0.318	4.27
Deutsche Bank AG	DBK GR	4/26/2012		Q1 2012	1.678	4.25
Banco Bilbao Vizcaya Argentaria SA	BBVA SM	4/26/2012		Q1 2012	0.195	1.99
Banco Santander SA	SAN SM	4/26/2012		Q1 2012	0.195	3.15
Iberdrola SA	IBE SM	4/26/2012		Q1 2012		-
Bolsas y Mercados Espanoles SA	BME SM	4/26/2012		Q1 2012	0.415	-
Wincor Nixdorf AG	WIN GR	4/26/2012		Q2 2012	0.755	3.15
Volkswagen AG	VOW GR	4/26/2012		Q1 2012		2.82
Sandvik AB	SAND SS	4/26/2012		Q1 2012	1.773	1.30
Banco de Sabadell SA	SAB SM	4/26/2012		Q1 2012	0.035	-
JM AB	JM SS	4/26/2012		Q1 2012	2.518	-
Imerys SA	NK FP	4/26/2012		Q1 2012		2.80
Svenska Handelsbanken AB	SHBA SS	4/26/2012		Q1 2012	5.074	3.01
Bayer AG	BAYN GR	4/26/2012		Q1 2012	1.435	1.85
Technip SA	TEC FP	4/26/2012		Q1 2012	1.02	1.58
Alcatel-Lucent/France	ALU FP	4/26/2012		Q1 2012	-0.025	10.48
Dassault Systemes SA	DSY FP	4/26/2012		Q1 2012	0.686	0.97
Admiral Group PLC	ADM LN	4/26/2012		Q1 2012		-
Jeronimo Martins SGPS SA	JMT PL	4/26/2012		Q1 2012	0.17	-
AstraZeneca PLC	AZN LN	4/26/2012		Q1 2012	1.756	2.54
Whitbread PLC	WTB LN	4/26/2012		Y 2012	1.316	4.24
ENI SpA	ENI IM	4/27/2012	Bef-mkt	Q1 2012	0.583	-
Galp Energia SGPS SA	GALP PL	4/27/2012	Bef-mkt	Q1 2012	0.075	-
YIT OYJ	YTY1V FH	4/27/2012	5:00	Q1 2012	0.275	-
Daimler AG	DAI GR	4/27/2012	5:30	Q1 2012	1.34	2.23
SSAB AB	SSABA SS	4/27/2012	6:00	Q1 2012	0.872	4.03
Yara International ASA	YAR NO	4/27/2012	6:00	Q1 2012	8.825	4.28
Amer Sports Oyj	AMEAS FH	4/27/2012	10:00	Q1 2012	0.113	-
Elisa OYJ	ELI1V FH	4/27/2012		Q1 2012	0.29	-

## Ежедневный обзор

Atlas Copco AB	ATCOA SS	4/27/2012	Q1 2012	2.562	-
Total SA	FP FP	4/27/2012	Q1 2012	1.364	-
Aixtron SE NA	AIXA GR	4/27/2012	Q1 2012	-0.146	6.70
DSV A/S	DSV DC	4/27/2012	Q1 2012	1.843	2.86
Sanofi	SAN FP	4/27/2012	Q1 2012	1.682	1.62
Software AG	SOW GR	4/27/2012	Q1 2012	0.385	4.96
Novo Nordisk A/S	NOVOB DC	4/27/2012	Q1 2012	8.483	2.68
Rheinmetall AG	RHM GR	4/27/2012	Q1 2012	1.006	1.27
Norsk Hydro ASA	NHY NO	4/27/2012	Q1 2012	0.224	-
NCC AB	NCCA SS	4/27/2012	Q1 2012	-1.38	-
Nobel Biocare Holding AG	NOBN VX	4/27/2012	Q1 2012	0.092	-
BASF SE	BAS GR	4/27/2012	Q1 2012	1.425	1.61
Oriflame Cosmetics SA	ORI SS	4/27/2012	Q1 2012	0.529	2.18
Acerinox SA	ACX SM	4/27/2012	Q1 2012		-
Deutsche Boerse AG	DB1 GR	4/27/2012	Q1 2012	1.178	1.47
Barclays PLC	BARC LN	4/27/2012	Q1 2012		2.89
Anheuser-Busch InBev NV	ABI BB	4/30/2012	Q1 2012	0.91	2.02
UBS AG	UBSN VX	4/30/2012	Q1 2012	0.38	-
Erste Group Bank AG	EBS AV	4/30/2012	Q1 2012		4.29
Aberdeen Asset Management PLC	ADN LN	4/30/2012	S1 2012	0.09	-
Reckitt Benckiser Group PLC	RB/ LN	5/1/2012	Q1 2012	0.554	0.88
BP PLC	BP/ LN	5/1/2012	Q1 2012	0.27	1.98
Imperial Tobacco Group PLC	IMT LN	5/1/2012	S1 2012		-
TNT Express NV	TNTE NA	5/2/2012	Q1 2012	0.06	1.26
Fuchs Petrolub AG	FPE GR	5/2/2012	Q1 2012	0.695	-
Swisscom AG	SCMN VX	5/2/2012	Q1 2012	8.085	-
Vestas Wind Systems A/S	VWS DC	5/2/2012	Q1 2012	-0.23	4.88
Telenet Group Holding NV	TNET BB	5/2/2012	Q1 2012	0.265	7.60
Sydbank A/S	SYDB DC	5/2/2012	Q1 2012	2.6	-
Cofinimmo	COFB BB	5/2/2012	Q1 2012	1.84	1.76
Home Retail Group PLC	HOME LN	5/2/2012	Y 2012	0.085	-
British Sky Broadcasting Group PLC	BSY LN	5/2/2012	Q3 2012	0.113	1.91

## Ежедневный обзор

Календарь отчетности, США*						
Компания	Тикер	Дата	Время			Оptionная амплитуда колебаний
Monsanto Co	MON US	4/4/2012	13:30	Q2 2012	2.113	-
Monsanto Co	MON US	4/4/2012	13:30	Q2 2012	2.118	3.20
Bed Bath & Beyond Inc	BBBY US	4/4/2012		Q4 2012	1.326	4.14
CarMax Inc	KMX US	4/5/2012	Bef-mkt	Q4 2012	0.4	5.59
Constellation Brands Inc	STZ US	4/5/2012	Bef-mkt	Q4 2012	0.383	1.89
Chevron Corp	CVX US	4/10/2012	21:00	Q1 2012	3.112	-
Alcoa Inc	AA US	4/10/2012		Q1 2012	-0.038	3.40
Fastenal Co	FAST US	4/12/2012	11:00	Q1 2012	0.343	2.25
JPMorgan Chase & Co	JPM US	4/13/2012	11:00	Q1 2012	1.146	1.74
Wells Fargo & Co	WFC US	4/13/2012	12:00	Q1 2012	0.727	2.45
SUPERVALU Inc	SVU US	4/13/2012		Q4 2012	0.356	8.95
Google Inc	GOOG US	4/13/2012		Q1 2012	9.616	5.02
Charles Schwab Corp/The	SCHW US	4/16/2012	Bef-mkt	Q1 2012	0.149	2.43
Gannett Co Inc	GCI US	4/16/2012	Bef-mkt	Q1 2012	0.309	4.80
Mattel Inc	MAT US	4/16/2012	10:00	Q1 2012	0.071	4.09
Citigroup Inc	C US	4/16/2012	12:00	Q1 2012	0.983	2.01
US Bancorp	USB US	4/17/2012	Bef-mkt	Q1 2012	0.641	1.57
Northern Trust Corp	NTRS US	4/17/2012	Bef-mkt	Q1 2012	0.658	2.67
Comerica Inc	CMA US	4/17/2012	Bef-mkt	Q1 2012	0.556	3.41
Coca-Cola Co/The	KO US	4/17/2012	Bef-mkt	Q1 2012	0.876	1.29
Goldman Sachs Group Inc/The	GS US	4/17/2012	12:00	Q1 2012	3.344	1.70
WW Grainger Inc	GWW US	4/17/2012	12:00	Q1 2012	2.499	2.34
Stryker Corp	SYK US	4/17/2012	20:00	Q1 2012	0.991	2.31
CSX Corp	CSX US	4/17/2012	Aft-mkt	Q1 2012	0.383	2.95
Yahoo! Inc	YHOO US	4/17/2012	Aft-mkt	Q1 2012	0.177	0.60
International Business Machines Corp	IBM US	4/17/2012	Aft-mkt	Q1 2012	2.639	2.01
Intel Corp	INTC US	4/17/2012		Q1 2012	0.494	2.91
Intuitive Surgical Inc	ISRG US	4/17/2012		Q1 2012	3.16	5.15
State Street Corp	STT US	4/17/2012		Q1 2012	0.883	2.13
Halliburton Co	HAL US	4/18/2012	Bef-mkt	Q1 2012	0.854	1.89

## Ежедневный обзор

Huntington Bancshares Inc/OH	HBAN US	4/18/2012	Bef-mkt	Q1 2012	0.14	4.59
Abbott Laboratories	ABT US	4/18/2012	Bef-mkt	Q1 2012	0.992	-
Bank of New York Mellon Corp/The	BK US	4/18/2012	10:30	Q1 2012	0.52	2.44
Marriott International Inc/DE	MAR US	4/18/2012	21:00	Q1 2012	0.286	-
American Express Co	AXP US	4/18/2012	Aft-mkt	Q1 2012	1.003	1.82
Stanley Black & Decker Inc	SWK US	4/18/2012	Aft-mkt	Q1 2012	1.12	2.34
Texas Instruments Inc	TXN US	4/18/2012		Q1 2012	0.173	-
Yum! Brands Inc	YUM US	4/18/2012		Q1 2012	0.724	1.92
PNC Financial Services Group Inc	PNC US	4/18/2012		Q1 2012	1.446	1.65
F5 Networks Inc	FFIV US	4/18/2012		Q2 2012	1.064	6.59
Noble Corp	NE US	4/18/2012		Q1 2012	0.432	2.33
Textron Inc	TXT US	4/18/2012		Q1 2012	0.363	4.23
Quest Diagnostics Inc	DGX US	4/18/2012		Q1 2012	1.012	2.74
M&T Bank Corp	MTB US	4/18/2012		Q1 2012	1.489	1.06
Zions Bancorporation	ZION US	4/18/2012		Q1 2012	0.288	-
QUALCOMM Inc	QCOM US	4/18/2012		Q2 2012	0.954	3.26
eBay Inc	EBAY US	4/18/2012		Q1 2012	0.515	3.43
Laboratory Corp of America Holdings	LH US	4/19/2012	Bef-mkt	Q1 2012	1.647	1.32
UnitedHealth Group Inc	UNH US	4/19/2012	Bef-mkt	Q1 2012	1.164	2.70
People's United Financial Inc	PBCT US	4/19/2012	Bef-mkt	Q1 2012	0.185	2.62
BB&T Corp	BBT US	4/19/2012	Bef-mkt	Q1 2012	0.56	2.40
First Horizon National Corp	FHN US	4/19/2012	Bef-mkt	Q1 2012	0.134	-
Sherwin-Williams Co/The	SHW US	4/19/2012	Bef-mkt	Q1 2012	0.714	3.03
KeyCorp	KEY US	4/19/2012	Bef-mkt	Q1 2012	0.187	1.91
Danaher Corp	DHR US	4/19/2012	10:00	Q1 2012	0.705	-
Southwest Airlines Co	LUV US	4/19/2012	10:30	Q1 2012	-0.05	4.47
Fifth Third Bancorp	FITB US	4/19/2012	10:30	Q1 2012	0.347	0.62
Bank of America Corp	BAC US	4/19/2012	11:00	Q1 2012	0.127	3.04
Rockwell Collins Inc	COL US	4/19/2012	11:30	Q2 2012	1.094	2.68
Verizon Communications Inc	VZ US	4/19/2012	11:30	Q1 2012	0.576	0.99
Chipotle Mexican Grill Inc	CMG US	4/19/2012	20:00	Q1 2012	1.919	3.35
Capital One Financial Corp	COF US	4/19/2012	20:05	Q1 2012	1.405	2.61
Altera Corp	ALTR US	4/19/2012	20:15	Q1 2012	0.361	-
Chubb Corp/The	CB US	4/19/2012	Aft-mkt	Q1 2012	1.467	1.19
Microsoft Corp	MSFT US	4/19/2012	Aft-mkt	Q3 2012	0.573	1.95
Union Pacific Corp	UNP US	4/19/2012		Q1 2012	1.637	3.49
El du Pont de Nemours & Co	DD US	4/19/2012		Q1 2012	1.55	-
Forest Laboratories Inc	FRX US	4/19/2012		Q4 2012	0.72	-
Advanced Micro Devices Inc	AMD US	4/19/2012		Q1 2012	0.093	4.64
Travelers Cos Inc/The	TRV US	4/19/2012		Q1 2012	1.512	1.58

## Ежедневный обзор

Omnicom Group Inc	OMC US	4/19/2012		Q1 2012	0.689	2.44
Nucor Corp	NUE US	4/19/2012		Q1 2012	0.399	1.09
Linear Technology Corp	LLTC US	4/19/2012		Q3 2012	0.415	2.73
Diamond Offshore Drilling Inc	DO US	4/19/2012		Q1 2012	1.004	0.73
Baxter International Inc	BAX US	4/19/2012		Q1 2012	1.006	1.55
Peabody Energy Corp	BTU US	4/19/2012		Q1 2012	0.595	2.60
Genuine Parts Co	GPC US	4/19/2012		Q1 2012	0.868	2.61
Johnson & Johnson	JNJ US	4/19/2012		Q1 2012	1.353	0.75
EMC Corp/MA	EMC US	4/19/2012		Q1 2012	0.358	2.55
Wynn Resorts Ltd	WYNN US	4/19/2012		Q1 2012	1.42	-
Honeywell International Inc	HON US	4/20/2012	Bef-mkt	Q1 2012	0.985	-
McDonald's Corp	MCD US	4/20/2012	Bef-mkt	Q1 2012	1.233	-
Ingersoll-Rand PLC	IR US	4/20/2012	11:00	Q1 2012	0.255	2.35
Altria Group Inc	MO US	4/20/2012		Q1 2012	0.486	-
American Electric Power Co Inc	AEP US	4/20/2012		Q1 2012	0.816	-
Robert Half International Inc	RHI US	4/20/2012		Q1 2012	0.277	0.70
Eaton Corp	ETN US	4/20/2012		Q1 2012	0.904	1.77
E*Trade Financial Corp	ETFC US	4/20/2012		Q1 2012	0.09	1.78
SanDisk Corp	SNDK US	4/20/2012		Q1 2012	0.919	0.57
Hudson City Bancorp Inc	HCBK US	4/20/2012		Q1 2012	0.151	-
St Jude Medical Inc	STJ US	4/20/2012		Q1 2012	0.828	3.38
Dover Corp	DOV US	4/20/2012		Q1 2012	1.02	-
TE Connectivity Ltd	TEL US	4/20/2012		Q2 2012	0.671	1.25
United Technologies Corp	UTX US	4/20/2012		Q1 2012	1.193	0.74
Apple Inc	AAPL US	4/20/2012		Q2 2012	9.686	-
International Game Technology	IGT US	4/20/2012		Q2 2012	0.258	2.96
Western Digital Corp	WDC US	4/20/2012		Q3 2012	1.498	1.76
Schlumberger Ltd	SLB US	4/20/2012		Q1 2012	1.009	2.17
PPG Industries Inc	PPG US	4/20/2012		Q1 2012	1.439	-
Freeport-McMoRan Copper & Gold Inc	FCX US	4/20/2012		Q1 2012	0.854	3.82
Morgan Stanley	MS US	4/20/2012		Q1 2012	0.341	4.00
Johnson Controls Inc	JCI US	4/20/2012		Q2 2012	0.529	3.19
BlackRock Inc	BLK US	4/20/2012		Q1 2012	2.968	-
SLM Corp	SLM US	4/20/2012		Q1 2012	0.514	1.50
Amphenol Corp	APH US	4/20/2012		Q1 2012	0.753	2.58
Biogen Idec Inc	BIIB US	4/20/2012		Q1 2012	1.484	1.00
L-3 Communications Holdings Inc	LLL US	4/20/2012		Q1 2012	1.869	-
Snap-on Inc	SNA US	4/20/2012		Q1 2012	1.16	-
Boston Scientific Corp	BSX US	4/20/2012		Q1 2012	0.089	-
Goodrich Corp	GR US	4/20/2012		Q1 2012	1.645	-

## Ежедневный обзор

Edwards Lifesciences Corp	EW US	4/20/2012		Q1 2012	0.483	-
Gilead Sciences Inc	GILD US	4/20/2012		Q1 2012	0.938	2.94
Reynolds American Inc	RAI US	4/20/2012		Q1 2012	0.649	-
ProLogis Inc	PLD US	4/20/2012		Q1 2012	0.398	-
Philip Morris International Inc	PM US	4/20/2012		Q1 2012	1.188	1.11
General Electric Co	GE US	4/20/2012		Q1 2012	0.328	1.52
SunTrust Banks Inc	STI US	4/23/2012	Bef-mkt	Q1 2012	0.304	5.06
ConocoPhillips	COP US	4/23/2012	12:00	Q1 2012	1.979	2.96
Ameriprise Financial Inc	AMP US	4/23/2012	Aft-mkt	Q1 2012	1.359	4.92
Hasbro Inc	HAS US	4/23/2012		Q1 2012	0.081	2.83
Xerox Corp	XRX US	4/23/2012		Q1 2012	0.224	5.52
Ryder System Inc	R US	4/24/2012	Bef-mkt	Q1 2012	0.584	4.36
Baker Hughes Inc	BHI US	4/24/2012	Bef-mkt	Q1 2012	0.877	5.57
Air Products & Chemicals Inc	APD US	4/24/2012	Bef-mkt	Q2 2012	1.394	3.14
McGraw-Hill Cos Inc/The	MHP US	4/24/2012	11:15	Q1 2012	0.455	2.87
AT&T Inc	T US	4/24/2012	12:00	Q1 2012	0.57	1.86
CH Robinson Worldwide Inc	CHRW US	4/24/2012	20:15	Q1 2012	0.651	4.64
FMC Technologies Inc	FTI US	4/24/2012	Aft-mkt	Q1 2012	0.453	4.08
Norfolk Southern Corp	NSC US	4/24/2012	Aft-mkt	Q1 2012	1.138	3.35
ACE Ltd	ACE US	4/24/2012	Aft-mkt	Q1 2012	1.868	3.38
PACCAR Inc	PCAR US	4/24/2012		Q1 2012	0.763	2.73
Hershey Co/The	HSY US	4/24/2012		Q1 2012	0.802	2.95
Amgen Inc	AMGN US	4/24/2012		Q1 2012	1.455	3.22
3M Co	MMM US	4/24/2012		Q1 2012	1.481	2.84
Juniper Networks Inc	JNPR US	4/24/2012		Q1 2012	0.134	6.26
Coach Inc	COH US	4/24/2012		Q3 2012	0.751	5.44
Regions Financial Corp	RF US	4/24/2012		Q1 2012	0.076	4.12
T Rowe Price Group Inc	TROW US	4/24/2012		Q1 2012	0.75	4.23
National Oilwell Varco Inc	NOV US	4/25/2012	Bef-mkt	Q1 2012	1.391	4.33
Harley-Davidson Inc	HOG US	4/25/2012	Bef-mkt	Q1 2012	0.719	4.97
WellPoint Inc	WLP US	4/25/2012	10:00	Q1 2012	2.292	2.86
NASDAQ OMX Group Inc/The	NDAQ US	4/25/2012	11:00	Q1 2012	0.642	3.37
Molex Inc	MOLX US	4/25/2012	11:30	Q3 2012	0.348	-
Boeing Co/The	BA US	4/25/2012	11:30	Q1 2012	0.926	2.67
Xilinx Inc	XLNX US	4/25/2012	21:00	Q4 2012	0.407	3.92
Varian Medical Systems Inc	VAR US	4/25/2012	Aft-mkt	Q2 2012	0.962	3.72
Assurant Inc	AIZ US	4/25/2012	Aft-mkt	Q1 2012	1.408	4.70
Owens-Illinois Inc	OI US	4/25/2012	Aft-mkt	Q1 2012	0.504	5.21
Williams Cos Inc/The	WMB US	4/25/2012	Aft-mkt	Q1 2012	0.363	3.31
Eli Lilly & Co	LLY US	4/25/2012		Q1 2012	0.78	2.47



## Ежедневный обзор

Netflix Inc	NFLX US	4/25/2012		Q1 2012	-0.271	12.75
Kimberly-Clark Corp	KMB US	4/25/2012		Q1 2012	1.167	-
Cooper Industries PLC	CBE US	4/25/2012		Q1 2012	1.003	3.27
AutoNation Inc	AN US	4/25/2012		Q1 2012	0.521	3.94
Jacobs Engineering Group Inc	JEC US	4/25/2012		Q2 2012	0.74	4.86
Equity Residential	EQR US	4/25/2012		Q1 2012	0.619	2.94
Akamai Technologies Inc	AKAM US	4/25/2012		Q1 2012	0.38	9.64
Masco Corp	MAS US	4/25/2012		Q1 2012	-0.006	7.51
Cabot Oil & Gas Corp	COG US	4/25/2012		Q1 2012	0.147	5.04
Newfield Exploration Co	NFX US	4/25/2012		Q1 2012	0.782	6.67
Express Scripts Inc	ESRX US	4/25/2012		Q1 2012	0.777	3.21
Bemis Co Inc	BMS US	4/26/2012	Bef-mkt	Q1 2012	0.468	-
Time Warner Cable Inc	TWC US	4/26/2012	Bef-mkt	Q1 2012	1.245	3.75
Ball Corp	BLL US	4/26/2012	Bef-mkt	Q1 2012	0.59	-
Colgate-Palmolive Co	CL US	4/26/2012	Bef-mkt	Q1 2012	1.235	2.66
Tyco International Ltd	TYC US	4/26/2012	Bef-mkt	Q2 2012	0.789	3.45
Exxon Mobil Corp	XOM US	4/26/2012	Bef-mkt	Q1 2012	1.988	2.22
Starwood Hotels & Resorts Worldwide Inc	HOT US	4/26/2012	Bef-mkt	Q1 2012	0.512	4.80
Xcel Energy Inc	XEL US	4/26/2012	Bef-mkt	Q1 2012	0.424	-
CME Group Inc	CME US	4/26/2012	Bef-mkt	Q1 2012	4.107	3.61
Coca-Cola Enterprises Inc	CCE US	4/26/2012	Bef-mkt	Q1 2012	0.334	2.28
Fidelity National Information Services Inc	FIS US	4/26/2012	Bef-mkt	Q1 2012	0.507	4.29
Waste Management Inc	WM US	4/26/2012	Bef-mkt	Q1 2012	0.39	3.34
Aetna Inc	AET US	4/26/2012	10:00	Q1 2012	1.391	3.51
PepsiCo Inc	PEP US	4/26/2012	11:00	Q1 2012	0.669	2.51
Kellogg Co	K US	4/26/2012	12:00	Q1 2012	0.991	2.80
Leggett & Platt Inc	LEG US	4/26/2012	Aft-mkt	Q1 2012	0.323	3.64
Starbucks Corp	SBUX US	4/26/2012	Aft-mkt	Q2 2012	0.388	4.18
Entergy Corp	ETR US	4/26/2012	Aft-mkt	Q1 2012	1.129	1.90
Broadcom Corp	BRCM US	4/26/2012		Q1 2012	0.552	6.00
Ecolab Inc	ECL US	4/26/2012		Q1 2012	0.487	2.53
Occidental Petroleum Corp	OXY US	4/26/2012		Q1 2012	2.006	3.43
Lexmark International Inc	LXK US	4/26/2012		Q1 2012	1.044	7.05
Safeway Inc	SWY US	4/26/2012		Q1 2012	0.297	3.62
CMS Energy Corp	CMS US	4/26/2012		Q1 2012	0.5	1.34
United States Steel Corp	X US	4/26/2012		Q1 2012	0.417	6.71
United Parcel Service Inc	UPS US	4/26/2012		Q1 2012	1.007	2.52
MetroPCS Communications Inc	PCS US	4/26/2012		Q1 2012	0.173	9.47
Valero Energy Corp	VLO US	4/26/2012		Q1 2012	0.362	4.62
Illinois Tool Works Inc	ITW US	4/26/2012		Q1 2012	0.951	2.29

## Ежедневный обзор

QEP Resources Inc	QEP US	4/26/2012		Q1 2012	0.456	7.49
Range Resources Corp	RRC US	4/26/2012		Q1 2012	0.168	5.35
Nabors Industries Ltd	NBR US	4/26/2012		Q1 2012	0.517	5.82
Amazon.com Inc	AMZN US	4/26/2012		Q1 2012	0.063	6.89
Dow Chemical Co/The	DOW US	4/26/2012		Q1 2012	0.585	3.79
Roper Industries Inc	ROP US	4/26/2012		Q1 2012	1.04	3.34
Cummins Inc	CMI US	4/26/2012		Q1 2012	2.204	5.38
Cameron International Corp	CAM US	4/26/2012		Q1 2012	0.555	4.74
BorgWarner Inc	BWA US	4/26/2012		Q1 2012	1.269	4.10
Becton Dickinson and Co	BDX US	4/26/2012		Q2 2012	1.384	2.56
Lockheed Martin Corp	LMT US	4/26/2012		Q1 2012	1.694	3.28
Waters Corp	WAT US	4/26/2012		Q1 2012	1.089	4.78
Hospira Inc	HSP US	4/26/2012		Q1 2012	0.456	6.80
Republic Services Inc	RSG US	4/26/2012		Q1 2012	0.42	2.85
Western Union Co/The	WU US	4/26/2012		Q1 2012	0.398	3.91
Sigma-Aldrich Corp	SIAL US	4/26/2012		Q1 2012	0.988	3.50
Noble Energy Inc	NBL US	4/26/2012		Q1 2012	1.399	3.70
Life Technologies Corp	LIFE US	4/26/2012		Q1 2012	0.93	5.08
CBRE Group Inc	CBG US	4/26/2012		Q1 2012	0.134	6.34
Lorillard Inc	LO US	4/26/2012		Q1 2012	1.985	3.81
DeVry Inc	DV US	4/26/2012		Q3 2012	0.987	5.74
Total System Services Inc	TSS US	4/26/2012		Q1 2012	0.297	-
Ford Motor Co	F US	4/26/2012		Q1 2012	0.382	3.46
Covidien PLC	COV US	4/27/2012	Bef-mkt	Q2 2012	1.03	3.34
Newmont Mining Corp	NEM US	4/27/2012	Bef-mkt	Q1 2012	1.145	3.66
Simon Property Group Inc	SPG US	4/27/2012	Bef-mkt	Q1 2012	1.677	3.34
Weyerhaeuser Co	WY US	4/27/2012	Bef-mkt	Q1 2012	-0.001	2.76
Eastman Chemical Co	EMN US	4/27/2012		Q1 2012	1.126	4.45
Sealed Air Corp	SEE US	4/27/2012		Q1 2012	0.219	4.03
O'Reilly Automotive Inc	ORLY US	4/27/2012		Q1 2012	1.031	4.76
Southwestern Energy Co	SWN US	4/27/2012		Q1 2012	0.346	4.88
Helmerich & Payne Inc	HP US	4/27/2012		Q2 2012	1.218	4.42
KLA-Tencor Corp	KLAC US	4/27/2012		Q3 2012	1.098	4.31
Equifax Inc	EFX US	4/27/2012		Q1 2012	0.657	-
Apache Corp	APA US	4/27/2012		Q1 2012	3.055	2.51
VF Corp	VFC US	4/27/2012		Q1 2012	1.878	4.08
DENTSPLY International Inc	XRAY US	4/27/2012		Q1 2012	0.511	3.92
Discovery Communications Inc	DISCA US	4/27/2012		Q1 2012	0.597	3.55
DTE Energy Co	DTE US	4/27/2012		Q1 2012	1.246	2.27
Motorola Mobility Holdings Inc	MMI US	4/27/2012		Q1 2012	0.006	-

## Ежедневный обзор

Merck & Co Inc	MRK US	4/27/2012	Q1 2012	0.975	2.73
International Paper Co	IP US	4/27/2012	Q1 2012	0.508	4.27
Federated Investors Inc	FII US	4/27/2012	Q1 2012	0.379	3.28
Sprint Nextel Corp	S US	4/27/2012	Q1 2012	-0.404	6.68
Moody's Corp	MCO US	4/27/2012	Q1 2012	0.665	4.92
Wyndham Worldwide Corp	WYN US	4/27/2012	Q1 2012	0.555	4.12
Cliffs Natural Resources Inc	CLF US	4/27/2012	Q1 2012	1.182	4.78
Cardinal Health Inc	CAH US	4/27/2012	Q3 2012	0.886	3.00
Coventry Health Care Inc	CVH US	4/27/2012	Q1 2012	0.642	2.22
Interpublic Group of Cos Inc/The	IPG US	4/27/2012	Q1 2012	-0.097	6.61
PulteGroup Inc	PHM US	4/27/2012	Q1 2012	-0.039	4.77
Cerner Corp	CERN US	4/27/2012	Q1 2012	0.499	5.10
Dr Pepper Snapple Group Inc	DPS US	4/27/2012	Q1 2012	0.478	3.54
SCANA Corp	SCG US	4/27/2012	Q1 2012	0.886	2.08
Harman International Industries Inc	HAR US	4/27/2012	Q3 2012	0.688	8.32
Invesco Ltd	IVZ US	4/27/2012	Q1 2012	0.425	3.69
Bristol-Myers Squibb Co	BMJ US	4/27/2012	Q1 2012	0.65	2.25
Celgene Corp	CELG US	4/27/2012	Q1 2012	1.13	4.16
Mead Johnson Nutrition Co	MJN US	4/27/2012	Q1 2012	0.779	3.07
EQT Corp	EQT US	4/27/2012	Q1 2012	0.614	4.18
Consol Energy Inc	CNX US	4/27/2012	Q1 2012	0.6	4.81
Zimmer Holdings Inc	ZMH US	4/27/2012	Q1 2012	1.301	3.90
Raytheon Co	RTN US	4/27/2012	Q1 2012	1.155	3.40
AmerisourceBergen Corp	ABC US	4/27/2012	Q2 2012	0.809	3.16
Northrop Grumman Corp	NOC US	4/27/2012	Q1 2012	1.593	3.00
Crown Castle International Corp	CCI US	4/27/2012	Q1 2012	0.182	4.25
Citrix Systems Inc	CTXS US	4/27/2012	Q1 2012	0.509	6.43
LSI Corp	LSI US	4/27/2012	Q1 2012	0.139	5.40
Dun & Bradstreet Corp/The	DNB US	4/27/2012	Q1 2012	1.324	1.78
Exelon Corp	EXC US	4/27/2012	Q1 2012	0.817	1.94
MeadWestvaco Corp	MWV US	4/27/2012	Q1 2012	0.225	-
Allegheny Technologies Inc	ATI US	4/27/2012	Q1 2012	0.511	6.16
Watson Pharmaceuticals Inc	WPI US	4/27/2012	Q1 2012	1.585	-
Southern Co/The	SO US	4/27/2012	Q1 2012	0.475	1.70
Torchmark Corp	TMK US	4/27/2012	Q1 2012	1.273	4.05
Rockwell Automation Inc	ROK US	4/27/2012	Q2 2012	1.27	4.75
Franklin Resources Inc	BEN US	4/27/2012	Q2 2012	2.16	3.96
Corning Inc	GLW US	4/27/2012	Q1 2012	0.286	4.22
General Dynamics Corp	GD US	4/27/2012	Q1 2012	1.709	3.24
Praxair Inc	PX US	4/27/2012	Q1 2012	1.357	2.98

## Ежедневный обзор

Motorola Solutions Inc	MSI US	4/27/2012		Q1 2012	0.546	4.27
Iron Mountain Inc	IRM US	4/27/2012		Q1 2012	0.282	4.25
Aflac Inc	AFL US	4/27/2012		Q1 2012	1.664	4.56
Host Hotels & Resorts Inc	HST US	4/27/2012		Q1 2012	0.132	4.49
Flowserve Corp	FLS US	4/27/2012		Q1 2012	1.657	4.67
AvalonBay Communities Inc	AVB US	4/27/2012		Q1 2012	1.243	3.37
Avery Dennison Corp	AVY US	4/27/2012		Q1 2012	0.448	4.91
Parker Hannifin Corp	PH US	4/27/2012		Q3 2012	1.723	4.16
Allstate Corp/The	ALL US	4/27/2012		Q1 2012	1.039	3.41
Teradyne Inc	TER US	4/27/2012		Q1 2012	0.279	6.50
Cincinnati Financial Corp	CINF US	4/27/2012		Q1 2012	0.41	3.09
VeriSign Inc	VRSN US	4/27/2012		Q1 2012	0.429	3.93
Medco Health Solutions Inc	MHS US	4/27/2012		Q1 2012	0.994	-
Dominion Resources Inc/VA	D US	4/27/2012		Q1 2012	0.941	1.63
Procter & Gamble Co/The	PG US	4/27/2012		Q3 2012	0.924	1.99
Novellus Systems Inc	NVLS US	4/27/2012		Q1 2012	0.608	4.41
Thermo Fisher Scientific Inc	TMO US	4/27/2012		Q1 2012	1.096	4.13
Whirlpool Corp	WHR US	4/27/2012		Q1 2012	1.17	6.52
Stericycle Inc	SRCL US	4/27/2012		Q1 2012	0.76	2.98
Fiserv Inc	FISV US	4/27/2012		Q1 2012	1.141	3.24
Expedia Inc	EXPE US	4/27/2012		Q1 2012	0.152	4.76
NYSE Euronext	NYX US	4/30/2012	Bef-mkt	Q1 2012	0.528	2.56
Humana Inc	HUM US	4/30/2012	10:00	Q1 2012	1.546	3.48
Plum Creek Timber Co Inc	PCL US	4/30/2012	Aft-mkt	Q1 2012	0.233	3.15
Pitney Bowes Inc	PBI US	4/30/2012		Q1 2012	0.5	3.83
Goodyear Tire & Rubber Co/The	GT US	4/30/2012		Q1 2012	0.072	7.68
FLIR Systems Inc	FLIR US	4/30/2012		Q1 2012	0.335	3.89
NextEra Energy Inc	NEE US	4/30/2012		Q1 2012	1.052	1.62
DR Horton Inc	DHI US	4/30/2012		Q2 2012	0.033	4.49
Newell Rubbermaid Inc	NWL US	4/30/2012		Q1 2012	0.308	4.86
Caterpillar Inc	CAT US	4/30/2012		Q1 2012	2.125	4.22
Aon Corp	AON US	4/30/2012		Q1 2012	0.861	3.58
Pinnacle West Capital Corp	PNW US	4/30/2012		Q1 2012	-0.089	-
Apartment Investment & Management Co	AIV US	4/30/2012		Q1 2012	0.37	-
Automatic Data Processing Inc	ADP US	5/1/2012	Bef-mkt	Q3 2012	0.914	2.38
Harris Corp	HRS US	5/1/2012	10:30	Q3 2012	1.338	3.73
CBS Corp	CBS US	5/1/2012	20:15	Q1 2012	0.431	4.22
Pfizer Inc	PFE US	5/1/2012		Q1 2012	0.564	2.95
Emerson Electric Co	EMR US	5/1/2012		Q2 2012	0.812	3.67
Time Warner Inc	TWX US	5/2/2012	Bef-mkt	Q1 2012	0.647	3.17

## Ежедневный обзор

CVS Caremark Corp	CVS US	5/2/2012	Bef-mkt	Q1 2012	0.63	3.53
Public Service Enterprise Group Inc	PEG US	5/2/2012	11:30	Q1 2012	0.672	2.33
Pioneer Natural Resources Co	PXD US	5/2/2012	Aft-mkt	Q1 2012	1.158	4.07
Symantec Corp	SYMC US	5/2/2012	Aft-mkt	Q4 2012	0.42	5.70
Prudential Financial Inc	PRU US	5/2/2012	Aft-mkt	Q1 2012	1.673	4.16
Lincoln National Corp	LNC US	5/2/2012	Aft-mkt	Q1 2012	0.954	5.67
Hartford Financial Services Group Inc	HIG US	5/2/2012	Aft-mkt	Q1 2012	0.982	5.47
MetLife Inc	MET US	5/2/2012	Aft-mkt	Q1 2012	1.24	4.40
Kimco Realty Corp	KIM US	5/2/2012	Aft-mkt	Q1 2012	0.301	3.77
FMC Corp	FMC US	5/2/2012		Q1 2012	1.84	4.02
IntercontinentalExchange Inc	ICE US	5/2/2012		Q1 2012	2.024	4.07
DaVita Inc	DVA US	5/2/2012		Q1 2012	1.452	4.39
Murphy Oil Corp	MUR US	5/2/2012		Q1 2012	1.457	3.13
Boston Properties Inc	BXP US	5/2/2012		Q1 2012	1.131	3.42
Anadarko Petroleum Corp	APC US	5/2/2012		Q1 2012	0.795	4.32
Loews Corp	L US	5/2/2012		Q1 2012	0.88	2.17
Edison International	EIX US	5/2/2012		Q1 2012	0.507	2.17
FirstEnergy Corp	FE US	5/2/2012		Q1 2012	0.789	2.22
Principal Financial Group Inc	PFG US	5/2/2012		Q1 2012	0.735	5.78
Mastercard Inc	MA US	5/2/2012		Q1 2012	5.274	5.09
Comcast Corp	CMCSA US	5/2/2012		Q1 2012	0.429	3.63

**Заявление об ограничении ответственности:** Настоящие обзоры подготовлены в информационных целях. Они ни в коем случае не являются и не должны рассматриваться как предложение купить или продать соответствующие ценные бумаги. Информация, содержащаяся в данных обзорах, получена из вызывающих доверия открытых источников. Несмотря на то, что при подготовке обзоров были предприняты необходимые меры для получения достоверной информации, ИК РУСС-ИНВЕСТ не исключает возможность включения в обзор ошибочной информации, предоставленной соответствующими источниками, и не несет за это ответственности. ИК РУСС-ИНВЕСТ, его работники и клиенты могут быть заинтересованы в покупке или продаже ценных бумаг, упомянутых в обзорах.

[www.russ-invest.com](http://www.russ-invest.com)**Москва**

Тел: +7(495) 363-93-80  
 Факс: +7(495) 363-93-90  
 E-mail: [mail@russ-invest.com](mailto:mail@russ-invest.com)  
 Адрес: Москва, 119019, 5-3/12  
 Нащокинский переулок

**Санкт-Петербург**

Тел: +7(812) 337-55-37  
 Факс: +7(812) 337-55-37  
 E-mail: [spb@russ-invest.com](mailto:spb@russ-invest.com)  
 Адрес: 190002, СПб, Набережная р.  
 Фонтанки, 52

**Самара**

Телефон: +7 (846) 262-75-52  
 Факс: +7 (846) 262-75-52  
 E-mail: [sam@russ-invest.com](mailto:sam@russ-invest.com)  
 Адрес: 443067, Самара, ул. Гагарина,  
 дом 95